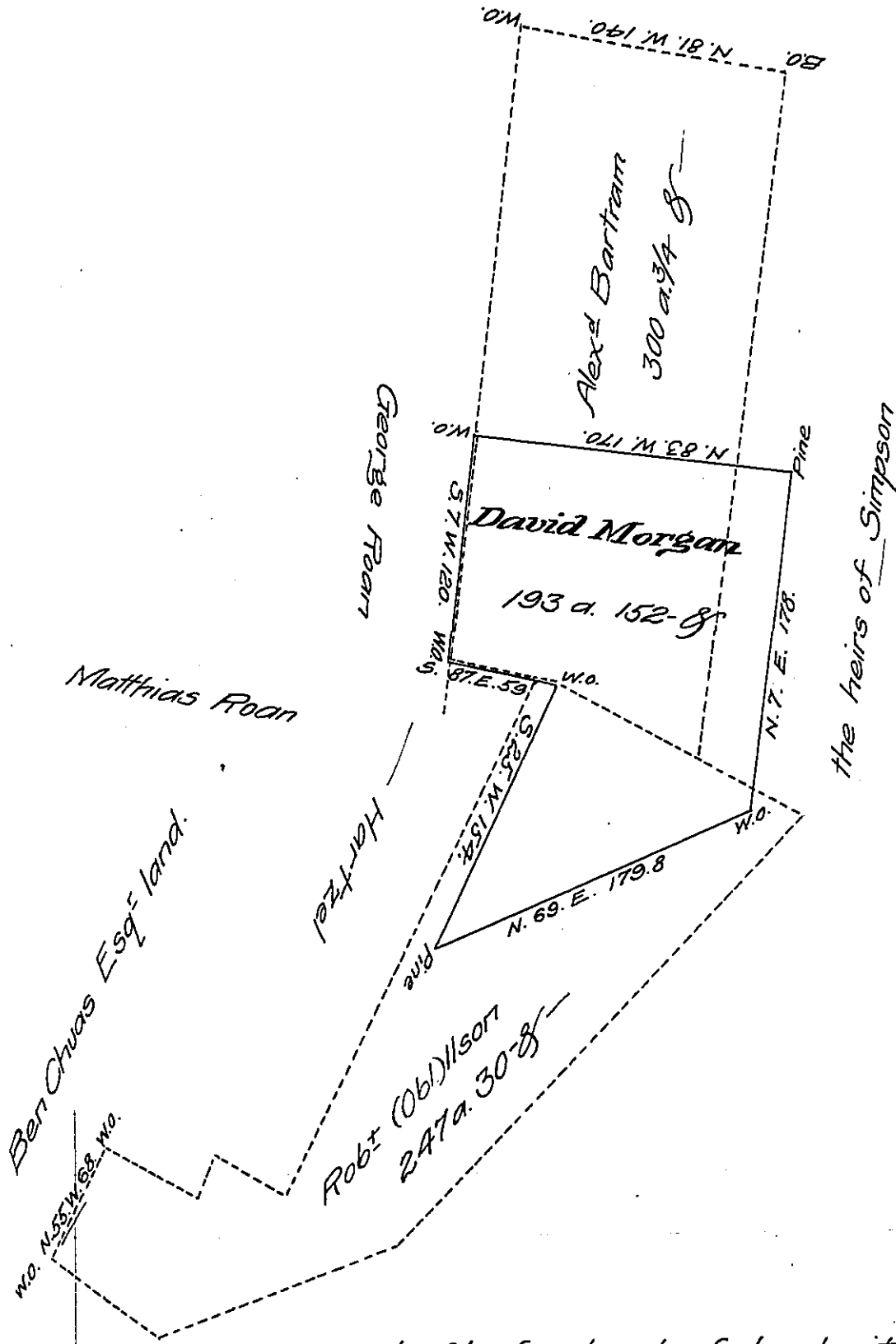


FORM NO. 1.



The dotted line Represents two Surveys which are laid down on a Genl draft in my office. there is also a warrant for the Survey of Robt Wilson. Dated the 17th day of June 1774. 200 a. on a Small run that empties into the second west Branch of Fishing creek about three miles from the mouth of said branch and to begin about one mile up said Run and extending upward - there is no warrant to be found for that of Alexd Bartram in the files of war: the Surveys appear to be made about the same time.

T. Woodside

The draft of a tract of land situate on a branch of Fishing Creek calld the west Branch of Raven creek Adjoining lands Surveyed for George Fone and near lands of one Harzel in Sugar loaf Township in the County of Columbia Containing One hundred & ninety three acres & 152 p. & allse Surveyed unto David Morgan on the 26th day of May 1815 by Virtue of his warrant dated the 19th day of September 1814

Thos Woodside D.S.

Richard T. Leech Esq^r
Surveyor General.

IN TESTIMONY that the above is a copy of the original remaining on file in the Department of Internal Affairs of Pennsylvania, made conformably to an Act of Assembly approved the 16th day of February 1833, I have hereunto set my hand and caused the Seal of said Department to be affixed at Harrisburg, this twenty-fourth day of October 1907.

Henry Houder
Secretary of Internal Affairs.